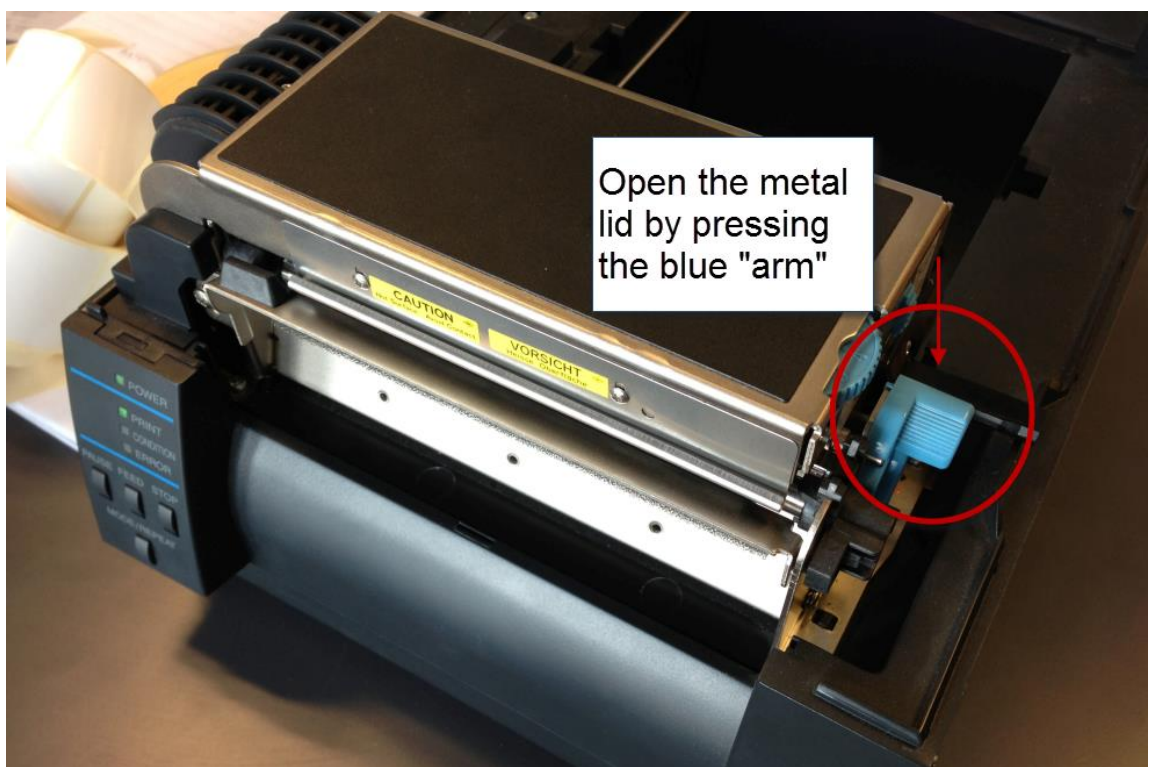
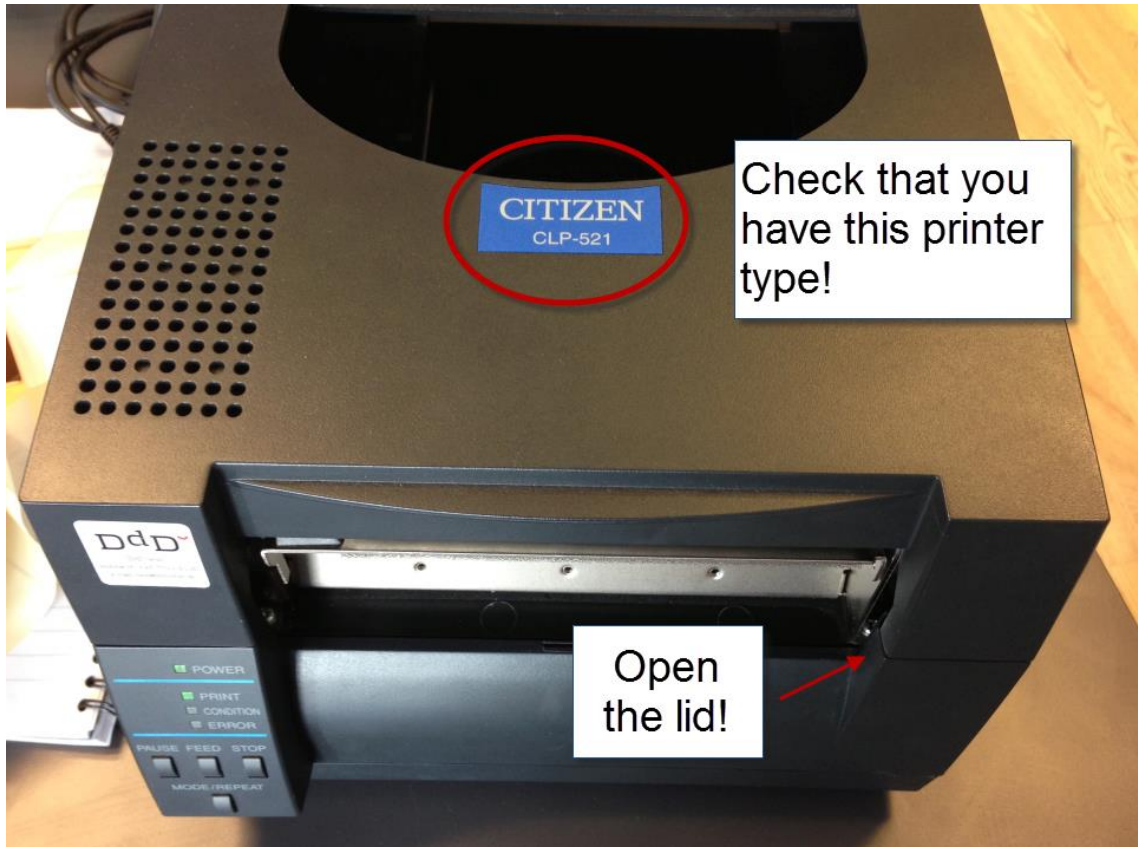
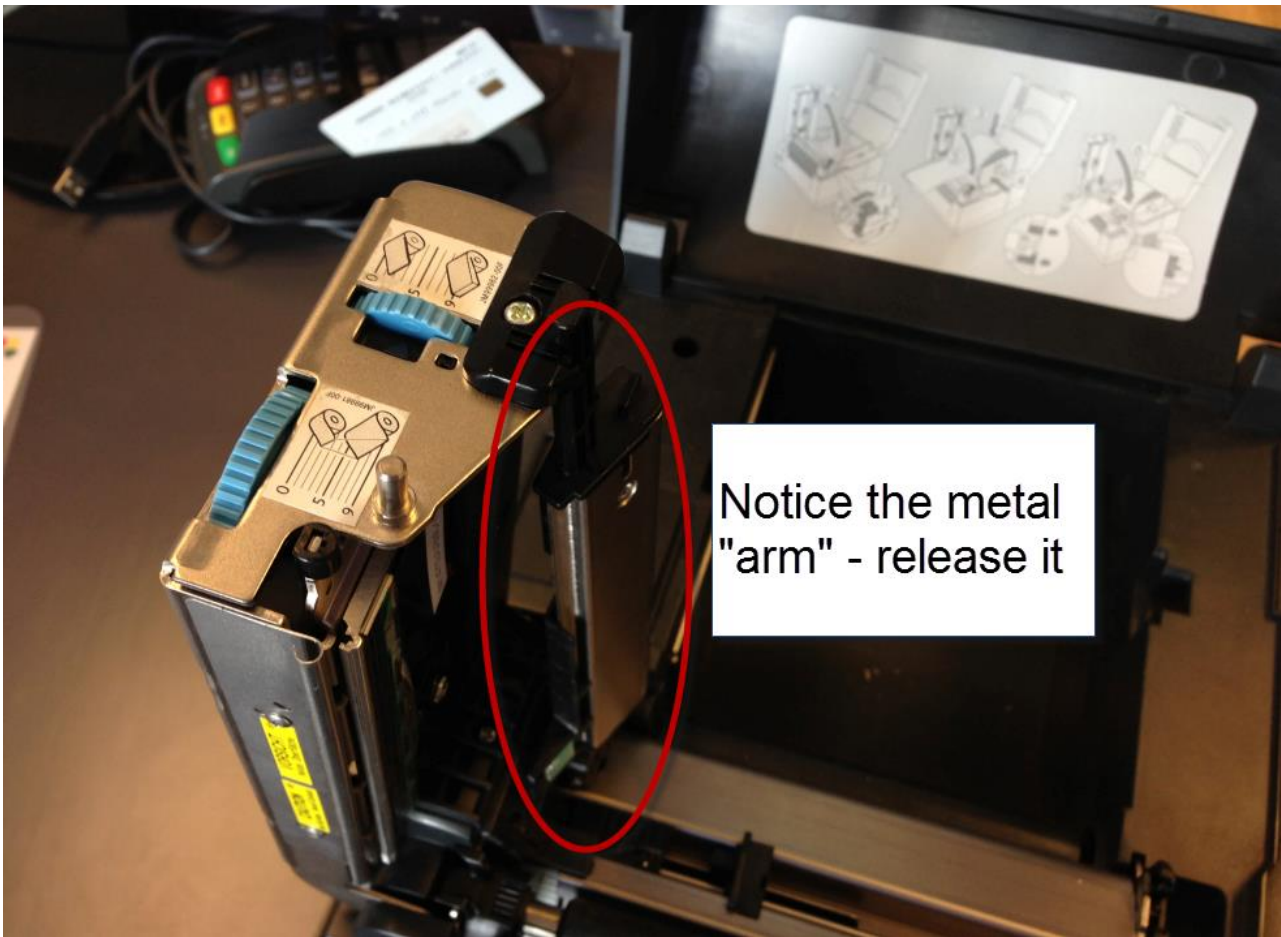
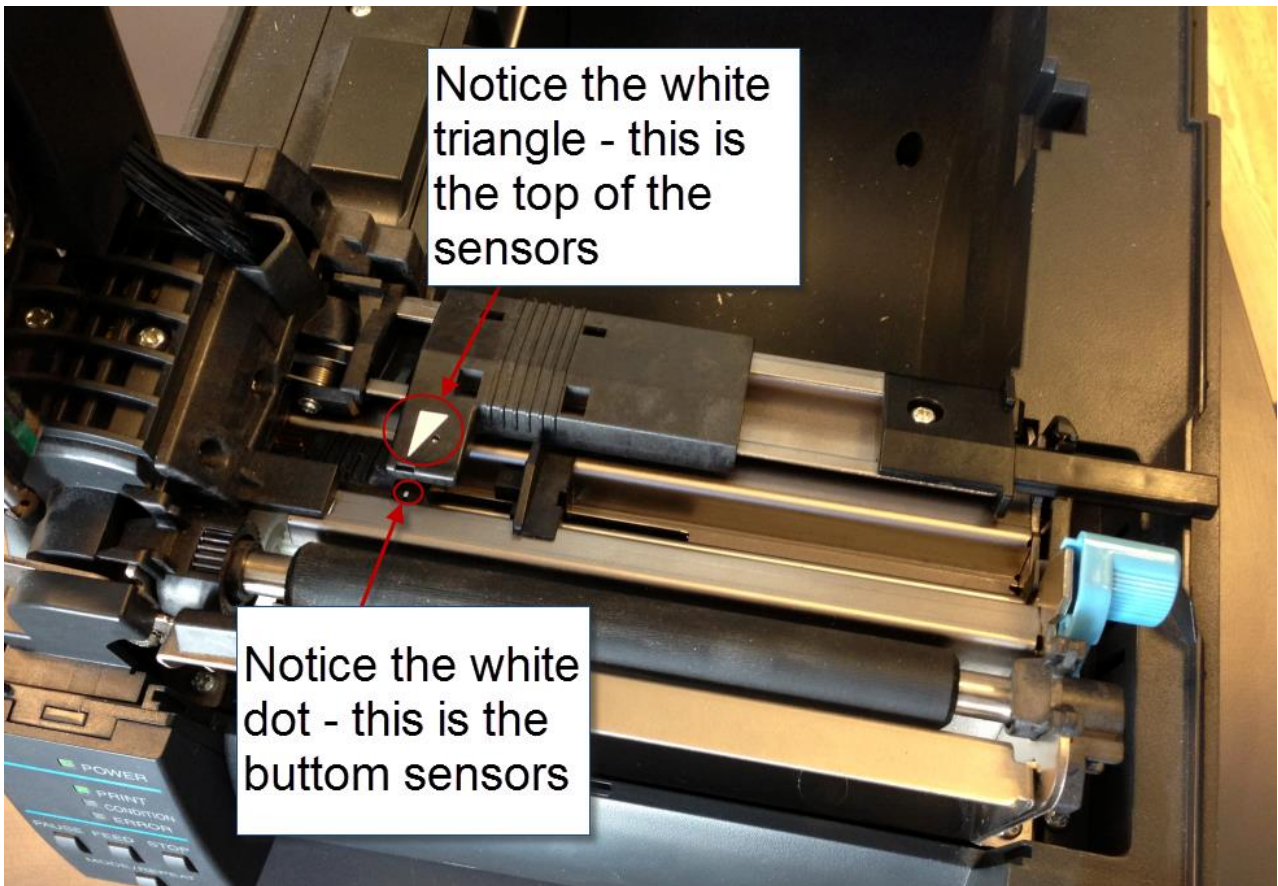


Adjusting the sensors in the label printer



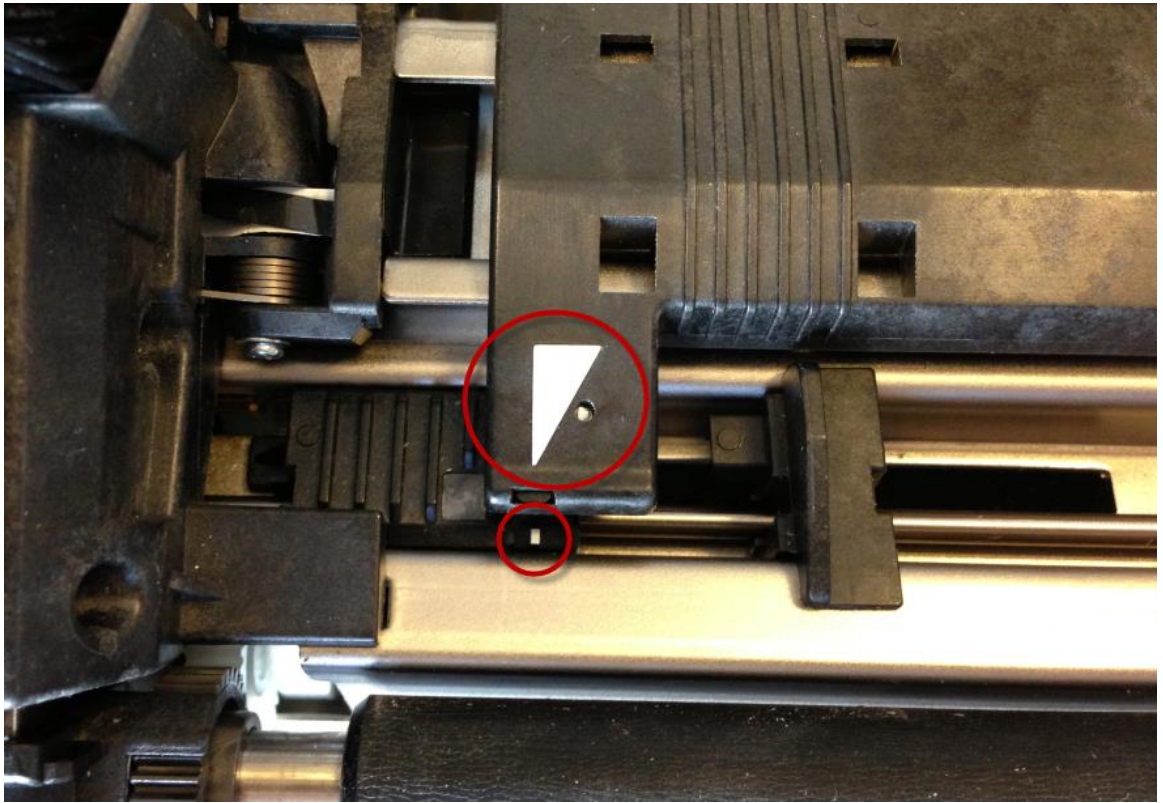


Notice the metal "arm" - release it



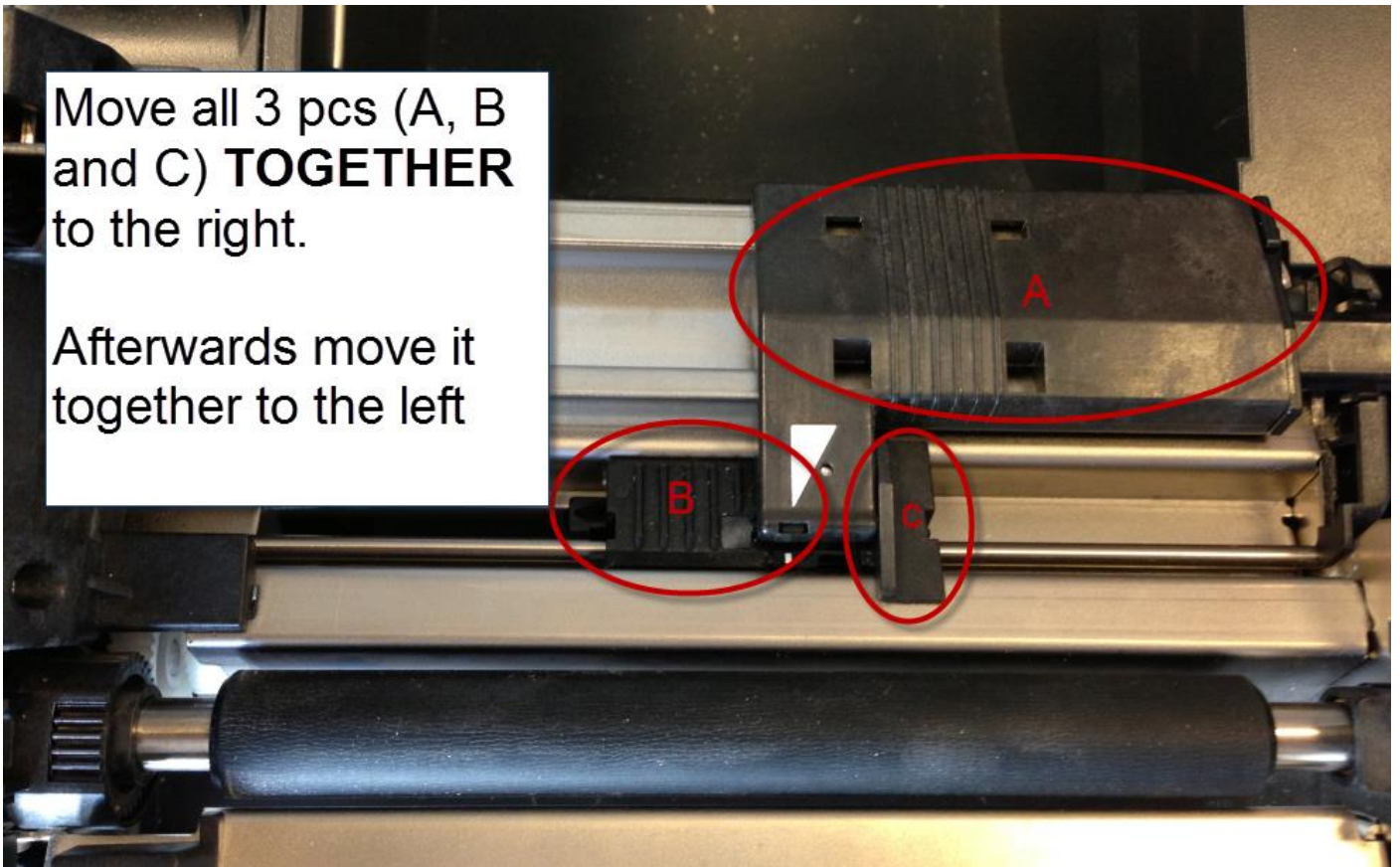
Notice the white triangle - this is the top of the sensors

Notice the white dot - this is the bottom sensors



Move all 3 pcs (A, B and C) **TOGETHER** to the right.

Afterwards move it together to the left



Move the button in the green circle back to the right and put your labels back in the printer

